

# INSTALLATION INSTRUCTIONS

## Top AND Rear mount displays



**FAILURE TO FOLLOW THESE GUIDELINES COULD RESULT IN WATER INGRESS  
AND CONDENSATION  
AND MAY INVALIDATE THE DISPLAY WARRANTY**

**Note:** Sections highlighted thus: **Apply to top mounted displays supplied from July 2022**

### 1 Introduction

This supplementary installation document is provided to ensure the correct assembly and sealing of Infotec top and rear mounted displays.

It is recommended where possible that the displays are not opened and the supplied cables and glands (where fitted and other than the temporary glands referred to in section 4) are used. If the display is to be opened it is **STRONGLY recommended that this is on a DRY DAY** to avoid condensation problems. It is highly recommended that if the display is opened then the internal SILICA GEL bags are replaced. Please ensure the doors are closed correctly. **This is further detailed in section 7 below**

When mounting any Infotec display it is important to support the display completely. This is done so not to stress the enclosure or its mounting studs during installation. All fixings need to be fully fitted and tightened before display support is removed.

### 2 Sealing of gaskets (Top mounted display only)

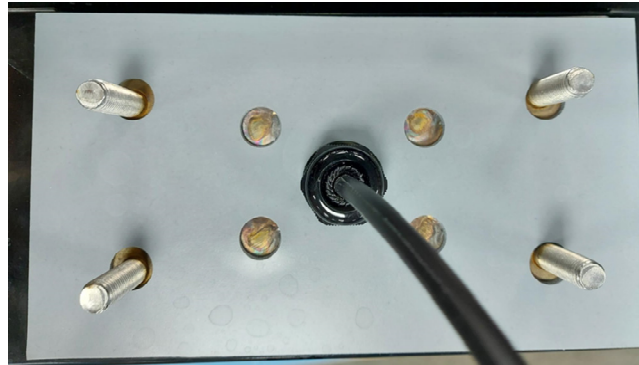
The Top mounted display is supplied with gaskets that fit between the display and the top mounting brackets. These GASKETS are supplied sealed to the display. To provide suitable protection in all operating conditions an all-weather PU (NOT silicone) SEALANT **must** be applied to the top side of the gasket prior to fitting to the mounting bracket. This is in support of the above mentioned sealed gasket installed during manufacturing, to ensure a watertight seal.



The sealant should be applied around the central hole (at approx. 60mm diameter) and directly around fixing studs to completely fill any gap between the stud and display gasket top face (See image above).

When fitting the stud washers excess visible sealant is a positive indicator of correct application. When securing the nuts, compression of the gaskets confirms adequate tightening before use of the locking nuts.

Top mounted displays supplied from July 2022 have a revised stud interface and different cable entry glands which no longer requires the use of additional sealant. These displays are identified with and top interfaces as shown below:



### 3 Mounting structures

If not already available, contact Infotec Ltd to obtain the correct structure assembly drawings.



The fitting of additional equipment to the structure supporting the display should only be undertaken if the appropriate STRUCTURAL calculations include this additional equipment. If additional equipment is to be fitted to the structure ensure that all mountings and fixing points are SEALED and watertight (dependant on location & application). NEVER fit additional equipment to the display itself.

The following points should be applied to mounting brackets.

- The surface of the mounting bracket that mates with the display should be **FLAT** and true.
- The gaskets used shall ensure a **WATERTIGHT** seal between the mounting bracket and the display (**top mounted displays**)

For displays fitted with a GPRS bung hole on the top face, this should be away from the vertical column, this will allow later access to fit an antenna and prevents the plastic bung from being crushed or damaged during final mounting of the display:



Top mounted displays supplied from July 2022 do not have a GPRS bung hole on the top face, therefore can be installed with the serial number label end facing away from the vertical gallows column where then viewable.

## 4 Cable entries

Infotec displays are provided with cable entries tapped to M20 x 1.5mm thread. ALL displays are provided with “flying lead” cables. Top mounted displays are GLANDED and sealed into these two entries. Rear or side mounted displays are supplied with temporary pre installation glands; these will need to be removed on installation and then fitted with suitably IP65 rated glands fitted to the cable entry points on installation. If the cables are removed and not used then it is **ESSENTIAL** that the cable entry holes are sealed appropriately using compression glands or permanently sealed with sealant.

## 5 Stainless steel bolts and fittings

The securing studs and nuts are stainless steel. If excessive friction is applied to stainless studs and nuts, they can FUSE. Friction occurs when excessive rotation speed and/or weight is applied when securing the top nuts. In order to reduce instances of fused fixings **DO NOT** use the nuts to “jack” the display upwards into place against the bracket.

## 6 Structure top bungs

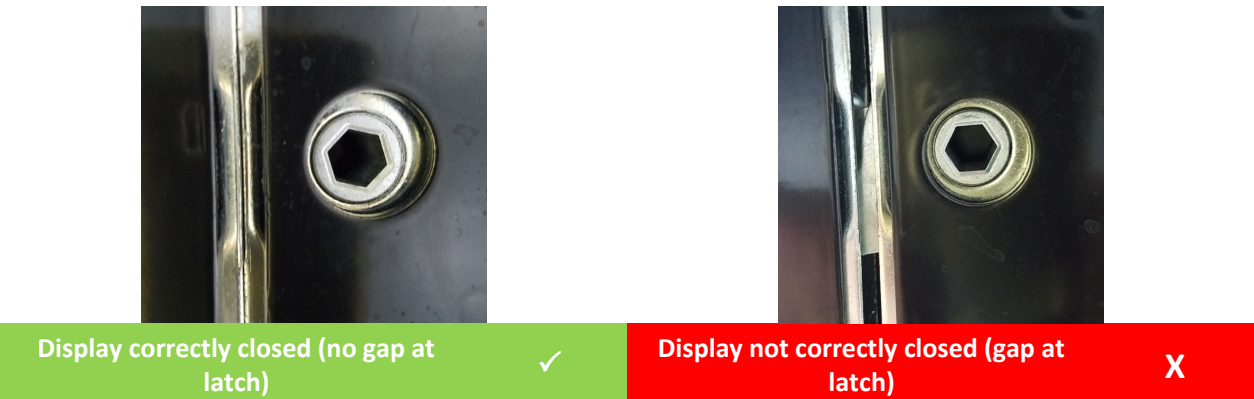
The Infotec P5095 top gallows is supplied with 8 plastic bungs and silicone O-rings to fully seal the display mounting hole access holes in the top section. These act as seals to prevent water entry onto the display fixing points. With the O-rings fitted the plastic bungs must be pressed or gently tapped fully home as shown below; third image from left:



7 Opening and closing the display

Where rotary latches are used to secure the display door, to the display, the lock must be rotated fully open until it reaches its stop limit, failure to do so will lead to the door not being able to close correctly and the door lock(s) may need resetting.

To reset the door locks, insert an 8mm Allen key into the lock with the door open and turn as if locking the door. Whilst holding the lock claw, turn the Allen key back again until the lock claw is seen to fully extend. Release the claw and continue to rotate the Allen key to the unlock position until it reaches its stop limit. The door can then be closed as normal. Refer to the YOUTUBE video “Getting to know the R5 draw latch” or the product O&M manual for further details.



Top mounted displays supplied from July 2022 are fitted with simpler quarter turn door fastener locks, these do not require indexing or resetting and secure door closure is more readily confirmed with a shorter lock cam travel. Careful attention is still required to ensure all or both locks of each door and display are secure to prevent water ingress.

8 Base protection plugs

Certain displays will be fitted with black plastic plugs on the under tray. These are factory fitted before shipment and allow the display to be temporarily placed on hard surfaces to avoid the base from becoming scratched. They also enable access for lifting from ground level.

When the display is installed in the final position, the plugs can be removed – they can be removed without the use of tools – then discarded responsibly as they provide no further useful function.

Top mounted displays supplied from July 2022 are not fitted with black plastic plugs on the under tray.

END OF CUSTOMER DOCUMENT